

# EVE™ PLUS

The World's Fastest Automated Cell Counter

# LESS THAN 1 SEC!



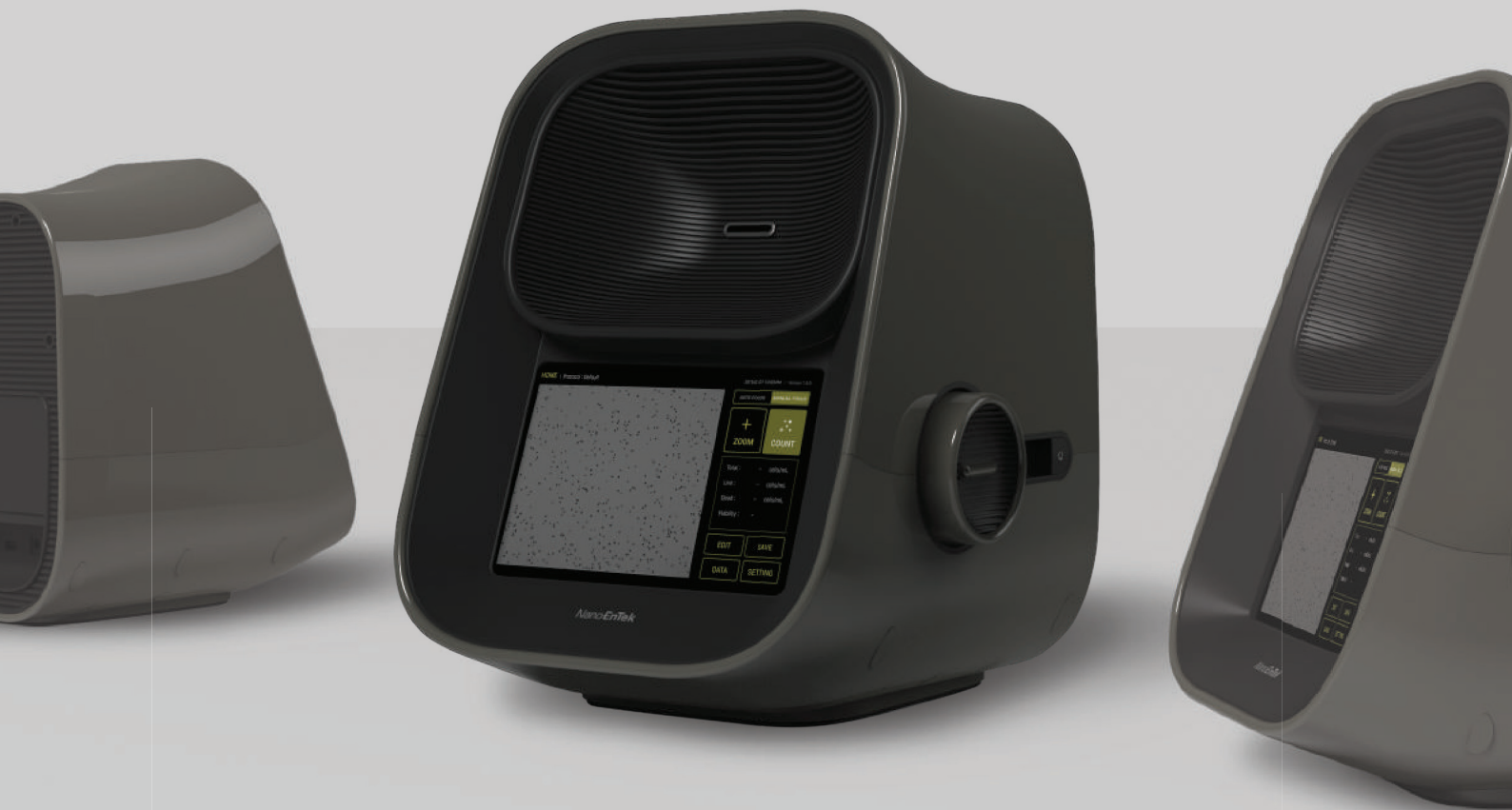
**FAST**



**EASY**



**ACCURATE**



System Platform

Tablet PC

Data Export

PDF, CSV

Cell size range

5 ~ 60  $\mu$ m

Time of analysis

< 1 sec (Manual Focus)  
< 10 sec (Auto Focus)

Connectivity

WiFi

Loading volume

10  $\mu$ L

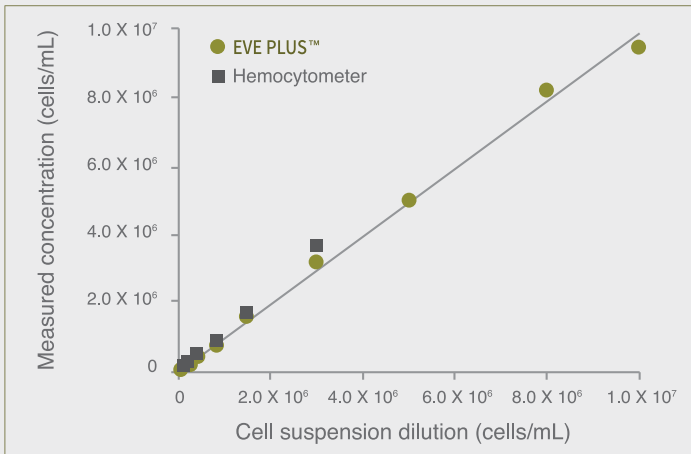
Measurement range

$1 \times 10^4 \sim 2 \times 10^7$

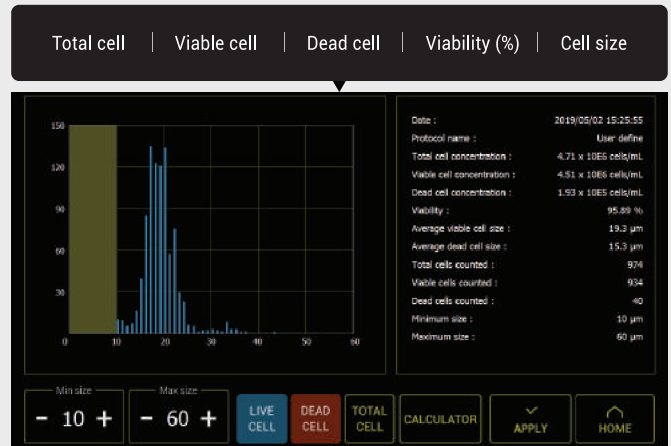
Staining method

Trypan blue stain

## Correlation of EVE™ PLUS and manual counting

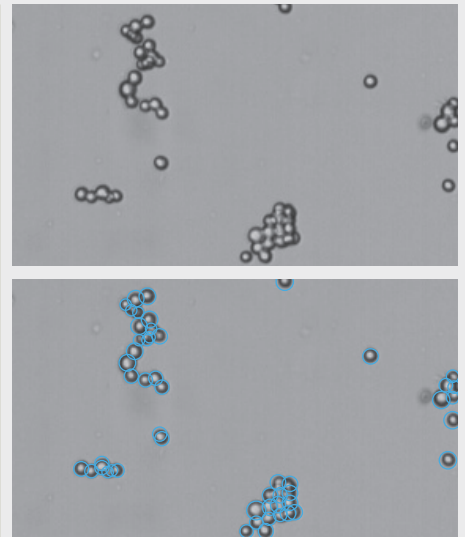
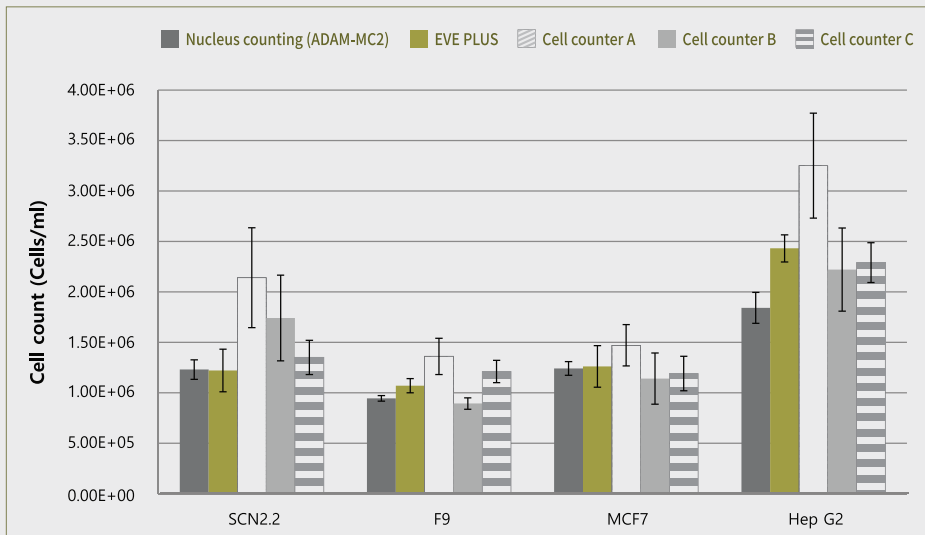


Measuring from the EVE™ PLUS extends further the high concentration range than hemocytometer readings



EVE™ PLUS measures the number and concentration of total cells, viable cells, dead cells. It provides viability results and cell size gating.

## Total cell counting result (Clumped cell)



Clumped cells were counted with EVE™ PLUS, nucleus counting, and the automated cell counters A, B, C. NanoEnTek's ADAM-MC2 device was used for nucleus counting. It is accurate in clumped cells by counting the stained nuclei through the PI staining method. EVE™ PLUS is comparable to the nucleus counting for all cell lines with accuracy and precision. The other automated cell counters A, B, and C were shown inaccurate numbers in the clumped cell. EVE™ PLUS identifies and counts the individual cells within the clumpy cells for accurate analysis.

## Cell lines validated on EVE™ PLUS

Cell Type	Animal	Organ	Growth Properties
HeLa	Human	Skin	Adherent
NIH-3T3	Mouse	Embryo	Adherent
U-2 OS	Human	Bone	Adherent
Jurkat	Human	Blood	Suspension
KG-1	Human	Blood	Suspension
HepG2	Human	Liver	Adherent
Hep3B	Human	Liver	Adherent
LNCaP	Human	Prostate	Adherent
SH-SY5Y	Human	Brain	Adherent
SCN2.2	Rat	Brain	Adherent
F9	Mouse	Embryo	Adherent
MCF7	Human	Breast	Adherent
A549	Human	Lung	Adherent
GH3	Rat	Pituitary gland	Adherent