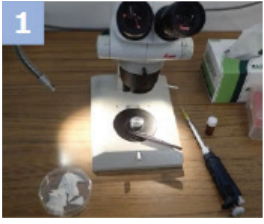
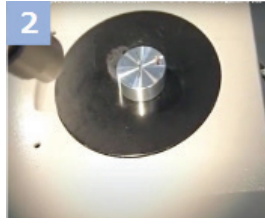


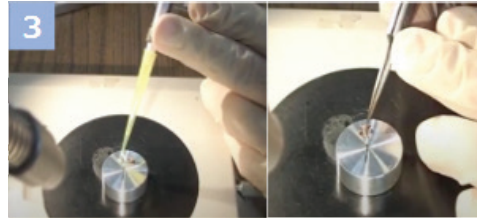
How to use „NanoSuit®“



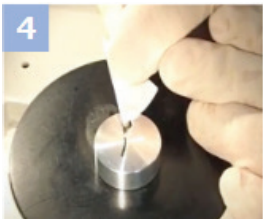
1 Prepare microscope, pipet, water-absorbing sheet (filter paper), NanoSuit solution and the object



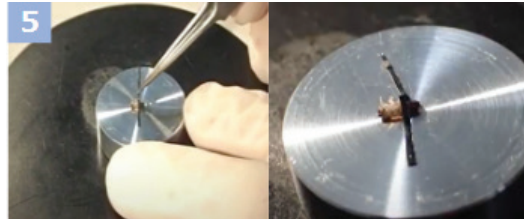
2 Place the object on the specimen table



3 Drop NanoSuit solution using pipet and dip the object into NanoSuit solution



4 Absorb excess NanoSuit solution (in order to obtain clear image, this step is necessary)



5 If necessary, strap the object using conductive adhesive tape



6 Place the specimen table in the sample room of the electron microscopy (SEM). Then start evacuation.



7 After evacuation, start observation immediately. (NanoSuit (barrier layer) is formed by electron beam irradiation.)

Tips

- To obtain a clear image, it is important to keep the amount of NanoSuit solution to the minimum necessary to wet the surface of the target object.
- After evacuation, start electron beam irradiation immediately. Otherwise, the object may be dried before forming „NanoSuit“ (most barrier layer).